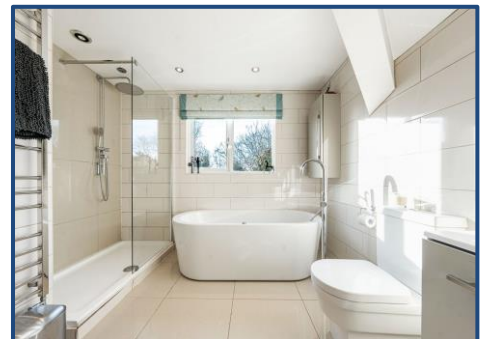


## Golf Open 2026 - Gloucester Road, Birkdale - Sleeps 11 Weekly Rental Of £25,000



### Sales

T: 01704 550048

E: sales@ajestateagents.co.uk



### Rentals

T: 01704 543434

E: rentals@ajestateagents.co.uk



### Property Management

T: 01704 545800

E: pm@ajestateagents.co.uk



**The Property  
Ombudsman**



## Property Features

- Golf Open 2026 Accommodation
- Closeby to Birkdale Village
- Sleeps Up To Eleven
- 1.2 Miles From Royal Birkdale
- Four Bedroom Main House & Two Bedroom Lodge
- Gated Off Street Parking
- Beautifully Kept Gardens
- Multiple Reception Spaces



## Property Description

AVAILABLE FOR THE ROYAL BIRKDALE OPEN 2026 – SLEEPS 11

Just 1.2 miles from the iconic Royal Birkdale Golf Club, this exceptional detached property, complete with a beautifully appointed two-bedroom lodge, offers an outstanding base for guests attending The Open Championship. Designed for comfort, style, and flexibility, it's the perfect retreat whether you're here for world-class golf, coastal relaxation, or quality time with family and friends. From the moment you arrive, the elegant hallway sets the tone with its warm, contemporary design. The calm, considered interiors flow throughout, creating a welcoming atmosphere that blends luxury with homely charm. The main house features multiple inviting living spaces, including a cosy front lounge, an impressive rear lounge-diner, and a spacious dining kitchen—ideal for relaxing or socialising after a day at the course.

**Accommodation** The property sleeps up to 11 guests across five thoughtfully arranged bedrooms, offering super king, king, double, and single options. The ground-floor master suite boasts a luxurious four-piece bathroom, complemented by three first-floor bedrooms, one with an en-suite shower room. A convenient ground-floor WC adds practicality. Sleeping arrangements include: 1 Super King 1 King 1 Double 1 Double Sofa Bed in the front lounge. The separate lodge provides additional flexibility with two further bedrooms (a double and a single), perfect for extended family or guests seeking extra privacy.

**Living & Dining** At the heart of the home lies a stunning open-plan kitchen-diner, finished with premium worktops and high-quality appliances. Whether preparing breakfast before heading to The Open or enjoying a leisurely evening meal, this space combines style and functionality. A separate utility room keeps things neat and efficient. From the kitchen and rear lounge, doors open onto a sunlit south-facing patio—ideal for alfresco dining or evening drinks under the stars. The lodge also features an open-plan kitchen, lounge, and dining area with a high-quality finish.

**Outdoor Space & Location** The beautifully maintained garden offers tranquil patio areas and lush lawns, creating a serene backdrop for your stay. Situated in the highly desirable Birkdale area, the property is just a short stroll from Birkdale Village, known for its stylish boutiques, cafés, pubs, and acclaimed restaurants. Amenities Guests enjoy high-speed Wi-Fi throughout, smart TVs in key living areas, and flexible check-in/check-out arrangements for a stress-free stay. Combining contemporary elegance with inviting comfort, Gloucester Road offers far more than a place to stay—it delivers a memorable experience. Whether you're here for the thrill of The Open 2026, the beauty of the coastline, or a luxurious getaway, this exclusive home promises warmth, convenience, and an unforgettable stay in Southport.



### Sales

T: 01704 550048

E: sales@ajestateagents.co.uk



### Rentals

T: 01704 543434

E: rentals@ajestateagents.co.uk



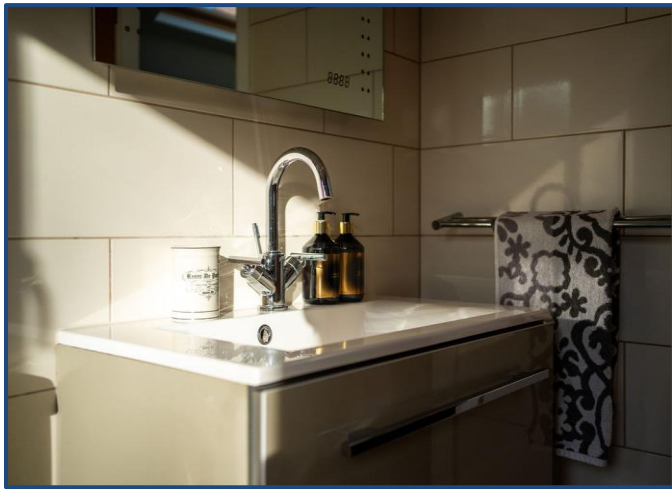
### Property Management

T: 01704 545800

E: pm@ajestateagents.co.uk



**The Property Ombudsman**



## Sales

T: 01704 550048

E: sales@ajestateagents.co.uk



## Rentals

T: 01704 543434

E: rentals@ajestateagents.co.uk



## Property Management

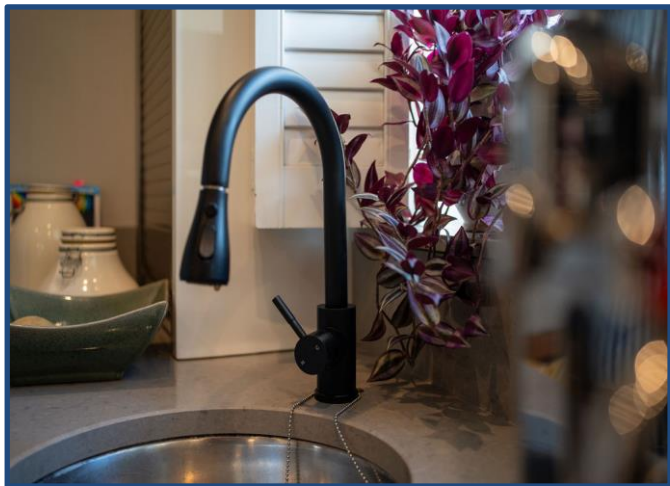
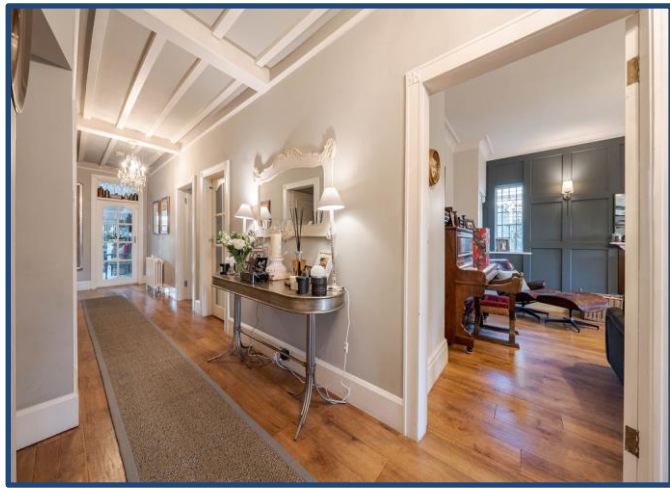
T: 01704 545800

E: pm@ajestateagents.co.uk



**The Property  
Ombudsman**





## Sales

T: 01704 550048

E: sales@ajestateagents.co.uk

naea | propertymark

PROTECTED

## Rentals

T: 01704 543434

E: rentals@ajestateagents.co.uk

arla | propertymark

PROTECTED

## Property Management

T: 01704 545800

E: pm@ajestateagents.co.uk



**The Property  
Ombudsman**



Gloucester Road, Birkdale, PR8 2AU

Total Area: 300.8 m<sup>2</sup> ... 3238 ft<sup>2</sup> Approximate sq ft - garage, outbuilding and eaves not measured

All measurements are approximate and for display purposes only

Disclaimer: Interested parties should satisfy themselves, by inspection or otherwise as to the accuracy of the description given and any floor plans shown in these property details. All measurements, distances and areas listed are approximate. Fixtures, fittings and other items are included unless specified in these details.

Sales

T: 01704 550048

E: sales@ajestateagents.co.uk



Rentals

T: 01704 543434

E: rentals@ajestateagents.co.uk



Property Management

T: 01704 545800

E: pm@ajestateagents.co.uk



The Property Ombudsman