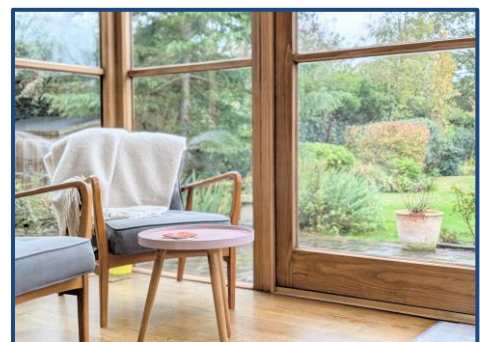


## Golf Open 2026 - Burlington Road, Birkdale - Sleeps 8 - Extended Stays Available



### Sales

T: 01704 550048

E: [sales@ajestateagents.co.uk](mailto:sales@ajestateagents.co.uk)



### Rentals

T: 01704 543434

E: [rentals@ajestateagents.co.uk](mailto:rentals@ajestateagents.co.uk)



### Property Management

T: 01704 545800

E: [pm@ajestateagents.co.uk](mailto:pm@ajestateagents.co.uk)



**The Property  
Ombudsman**



## Property Features

- 2026 GOLF OPEN ACCOMMODATION
- 1.1 MILES FROM ROYAL BIRKDALE
- SLEEPS 8
- FOUR DOUBLE BEDROOMS
- THREE RECEPTION ROOMS
- STUNNING INTERIOR
- MODERN KITCHEN DINER LOUNGE
- LARGE REAR GARDEN



## Property Description

Anthony James proudly presents this exceptionally appointed four-bedroom Victorian villa, ideally situated just 1.1 miles from the world-renowned Royal Birkdale Golf Club — a superb retreat for guests attending The Open in 2026. Blending contemporary style with timeless character, this impressive detached home spans three spacious levels and offers generous accommodation ideal for families or larger groups. The property features four bedrooms with a mixture of double and king-sized beds. One of the rear double bedrooms boasts a private shower suite. A luxurious four-piece family bathroom is also located on the first floor, complete with a freestanding clawfoot bathtub and a large walk-in shower. To the second floor is a further handy shower room featuring large walk in shower. Three beautifully designed reception rooms provide versatile living space. The front lounge serves as a peaceful library or reading room, perfect for quiet moments of relaxation, while the second sitting room showcases a Scandinavian-inspired design with an ornate fireplace. Extending across the rear of the property, the expansive family room incorporates a dining area, kitchen breakfast bar, and sunroom/snug, creating an inviting open-plan hub for entertaining and everyday living. At the heart of the home lies the contemporary kitchen, equipped with an impressive range of appliances including a large main oven, further secondary microwave oven, American-style fridge freezer, five-ring gas burner hob, dishwasher and coffee machine. A convenient WC and utility room are discreetly positioned behind the stairs on the ground floor. Outside, the large garden offers multiple patio areas, manicured lawns, and colourful flowerbeds, providing a perfect sunny aspect for relaxation after a day at the course. The property's location combines the tranquillity of leafy residential streets with the vibrant charm of nearby Birkdale village, where independent boutiques, cosy cafés, lively bars, and acclaimed restaurants await — all just a short stroll away. Guests will enjoy complimentary WiFi and a range of modern conveniences such as Sonos sound system to the kitchen, dining room & second lounge. Flexible arrival and departure times can be arranged to ensure a seamless, stress-free experience, whilst extended stays are also available upon enquiry. This rare gem unites classic elegance with contemporary comfort, offering the perfect base for your Royal Birkdale Open 2026 experience.



### Sales

T: 01704 550048

E: sales@ajestateagents.co.uk



### Rentals

T: 01704 543434

E: rentals@ajestateagents.co.uk



### Property Management

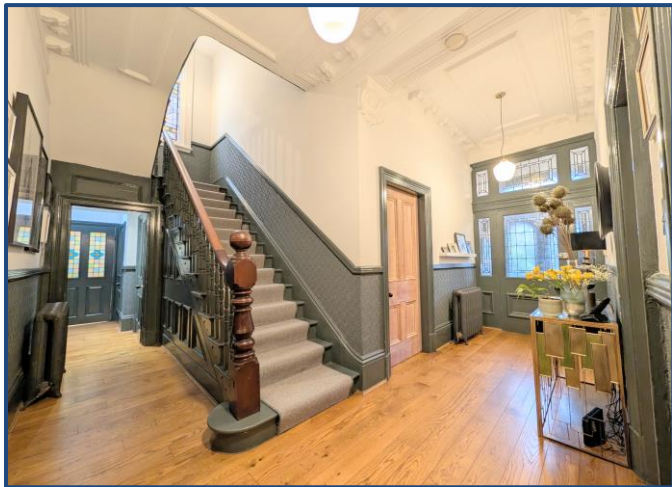
T: 01704 545800

E: pm@ajestateagents.co.uk



The Property Ombudsman





#### Sales

T: 01704 550048

E: sales@ajestateagents.co.uk



#### Rentals

T: 01704 543434

E: rentals@ajestateagents.co.uk



#### Property Management

T: 01704 545800

E: pm@ajestateagents.co.uk



**The Property  
Ombudsman**





#### Sales

T: 01704 550048

E: sales@ajestateagents.co.uk



#### Rentals

T: 01704 543434

E: rentals@ajestateagents.co.uk



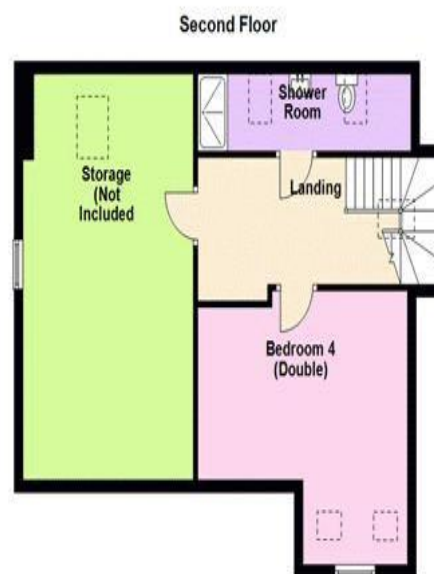
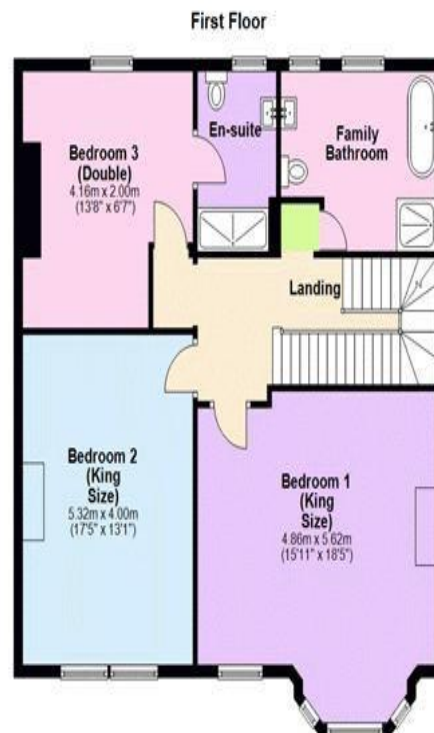
#### Property Management

T: 01704 545800

E: pm@ajestateagents.co.uk



**The Property  
Ombudsman**



Disclaimer: Interested parties should satisfy themselves, by inspection or otherwise as to the accuracy of the description given and any floor plans shown in these property details. All measurements, distances and areas listed are approximate. Fixtures, fittings and other items are included unless specified in these details.



**Sales**  
T: 01704 550048  
E: sales@ajestateagents.co.uk



**Rentals**  
T: 01704 543434  
E: rentals@ajestateagents.co.uk

**Property Management**  
T: 01704 545800  
E: pm@ajestateagents.co.uk



**The Property Ombudsman**