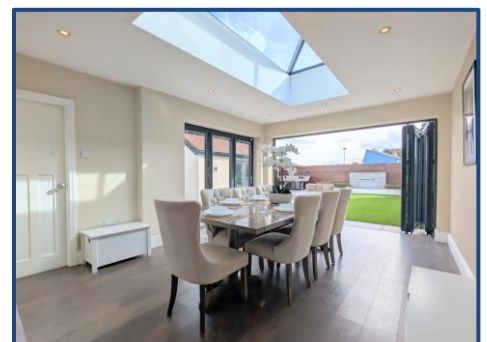


**Golf Open 2026 - Hillsview Road, Ainsdale - Sleeps 6 -  
extended stay deals (2-3 Weeks)**  
**Weekly Rental Of £6,500**



**Sales**

T: 01704 550048

E: sales@ajestateagents.co.uk



**Rentals**

T: 01704 543434

E: rentals@ajestateagents.co.uk



**Property Management**

T: 01704 545800

E: pm@ajestateagents.co.uk



**The Property  
Ombudsman**

## Property Features

- 2026 GOLF OPEN ACCOMMODATION
- 2.6 MILES FROM ROYAL BIRKDALE
- SLEEPS SIX
- THREE DOUBLE BEDROOMS
- WALKING DISTANCE TO AINSDALE VILLAGE
- STYLISH MODERN FEEL
- OFF STREET PARKING
- SUNNY ASPECT REAR GARDEN



## Property Description

### AVAILABLE FOR THE ROYAL BIRKDALE OPEN 2026 – SLEEPS 6

Welcome to this beautifully presented home, ideally located just 2.6 miles from the world-renowned Royal Birkdale Golf Club — a perfect base for guests attending The Open in 2026. Offering a stylish and comfortable retreat, this thoughtfully extended three-bedroom semi-detached property combines modern design with a warm, welcoming atmosphere. Spread across two well-planned levels, the house is perfectly suited for families or small groups. Upstairs, you'll find two generous double bedrooms and a third smaller double room, each with wardrobe storage. The highlight of the first floor is a luxurious four-piece bathroom, complete with double sinks, a freestanding bathtub, a spacious shower cubicle, and WC, all finished with elegant tiling. As you step through the front door, you're greeted by a light, contemporary hallway that leads into a spacious yet cosy lounge, ideal for unwinding after a day at the course. To the rear, an impressive open-plan living space unfolds, seamlessly blending lounge, dining, office, and kitchen areas. The kitchen itself is a standout feature, designed in a timeless shaker style with quartz-style worktops, integrated appliances, and plenty of workspace for cooking and entertaining. A tucked-away utility room with a washing machine, dryer, and a convenient downstairs WC adds to the home's practicality. Two sets of bi-fold doors open onto a beautifully landscaped garden with a lush lawn and sleek ceramic-tiled patios. High-quality outdoor furniture, including a comfortable sofa and a stylish high table, create the perfect setting for evening drinks or alfresco dining on warm summer nights. The property's location strikes a perfect balance between tranquillity and convenience. Just a short drive from Royal Birkdale and within walking distance of the charming village of Ainsdale, guests can enjoy quiet, leafy streets and a relaxed coastal atmosphere. Ainsdale offers a fantastic selection of local shops, cafés, bars, and restaurants, along with stunning natural attractions such as its pine woods and expansive sandy beaches — perfect for long walks or breathtaking sunsets. For added convenience, Ainsdale train station, located in the heart of the village, is just one stop from Hillside station, with a journey time of approximately three minutes, providing an easy alternative way to reach the event in under ten minutes. Modern comforts include high-speed Wi-Fi throughout and smart TVs in both living areas, ensuring you stay connected and entertained. Flexible check-in and check-out times are available to suit your travel schedule, while off-road parking on the driveway accommodates up to three cars. Whether you're visiting for The Open or simply seeking a stylish coastal getaway, this elegant and well-equipped home provides the perfect blend of comfort, convenience, and charm. Discounts available for 7 or 21 days.



Sales

T: 01704 550048

E: sales@ajestateagents.co.uk



Rentals

T: 01704 543434

E: rentals@ajestateagents.co.uk

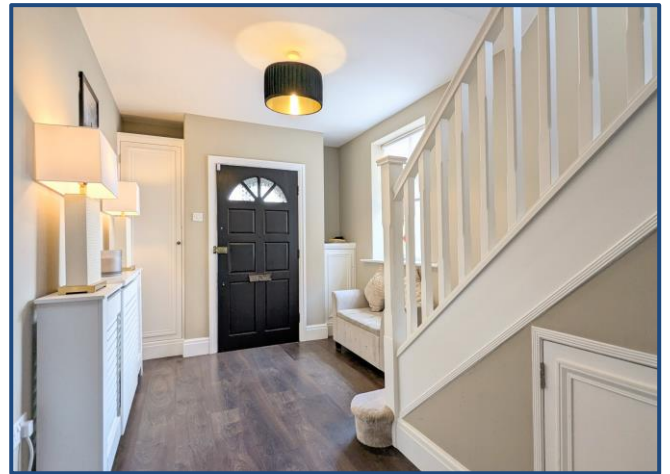
Property Management

T: 01704 545800

E: pm@ajestateagents.co.uk



The Property Ombudsman



naea | propertymark  
PROTECTED

Sales  
T: 01704 550048  
E: sales@ajestateagents.co.uk

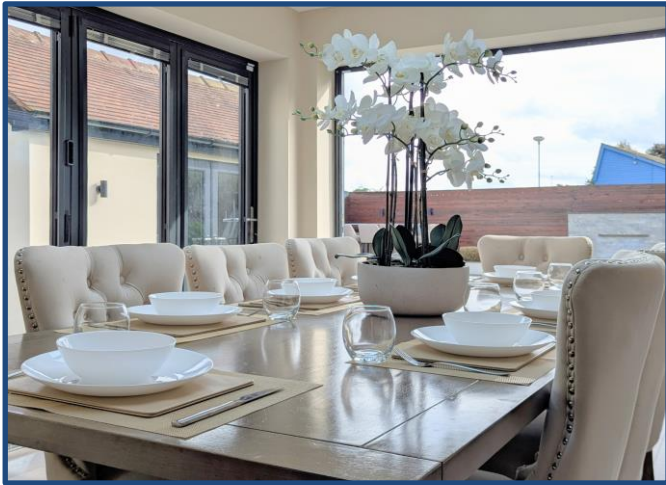
arla | propertymark  
PROTECTED

Rentals  
T: 01704 543434  
E: rentals@ajestateagents.co.uk

Property Management  
T: 01704 545800  
E: pm@ajestateagents.co.uk



The Property Ombudsman



naea | propertymark

PROTECTED

Sales

T: 01704 550048

E: sales@ajestateagents.co.uk

arla | propertymark

PROTECTED

Rentals

T: 01704 543434

E: rentals@ajestateagents.co.uk

Property Management

T: 01704 545800

E: pm@ajestateagents.co.uk



The Property Ombudsman



Disclaimer: Interested parties should satisfy themselves, by inspection or otherwise as to the accuracy of the description given and any floor plans shown in these property details. All measurements, distances and areas listed are approximate. Fixtures, fittings and other items are included unless specified in these details.