

**Hulme Street, Southport- Monthly Rental Of £3,000**



**KEY FEATURES:**

- PRIME CENTRAL LOCATION • BEACH/LAKESIDE LOCATION • NO PETS ALLOWED • SLEEPS 6 • ALL BEDROOMS WITH EN-SUITE • 3 LARGE BEDROOMS • JACUZZI BATH & EPC: C • OPEN PLAN MODERN LIVING AREA

naea | propertymark  
**PROTECTED**

**Sales**  
T: 01704 550048  
E: sales@ajestateagents.co.uk

arla | propertymark  
**PROTECTED**

**Rentals**  
T: 01704 543434  
E: rentals@ajestateagents.co.uk

**Property Management**  
T: 01704 545800  
E: pm@ajestateagents.co.uk



**The Property Ombudsman**

## Property Description

There is nothing else like it in Southport! This unique three double bedroom property is set over two floors and decorated to a high standard with each bedroom professionally designed for your comfort. Three Luxury en suites and a Jacuzzi bath. Each bedroom offers king size beds. The open plan living area is situated on the top floor and offers all modern appliances. Within walking distance of Southport's famous town centre, train station, bars and Southport's famous golf courses. Private garage parking for 2 cars. Distance to Royal Birkdale Golf Club 2.6 miles, approx 11 min by car. For booking and availability please go to <https://www.holidaylettings.co.uk/rentals/southport/259419> Rate: 100 pounds per night for week or more or 150 pounds for short stay min of 3 nights

## Rooms

### Entrance

#### **HALL** 12' 4" x 11' 4" (3.76m x 3.46m)

Two windows to front, stairs, feature spiral wooden stairs leading to all floors

#### **BEDROOM 3** 17' 7" x 15' 3" (5.37m x 4.64m)

Window to front, two windows to side, wooden floors, door to:

#### **EN-SUITE SHOWER ROOM** 7' 2" x 5' 11" (2.18m x 1.81m)

Shower, wash hand basin and WC.

#### **GARAGE** 17' 11" x 17' 7" (5.46m x 5.37m)

Integral double garage, key fob access Up and over door, electrics and water, door to:

#### **UTILITY ROOM** 5' 11" x 4' 10" (1.81m x 1.47m)

With a matching range of base units.

### LANDING

Box window to front, two windows to rear, stairs, door to:

#### **BEDROOM 2** 17' 7" x 15' 3" (5.37m x 4.64m)

Two windows to side, two windows to front open onto Juliet balcony, luxury cream carpets to floor, door to:

#### **BATHROOM** 11' 8" x 5' 7" (3.55m x 1.69m)

Fitted with four piece suite comprising deep Jacuzzi Bath, wash hand basin, shower cubicle and low-level WC, tiled flooring.

#### **BEDROOM 1** 17' 11" x 17' 7" (5.46m x 5.37m)

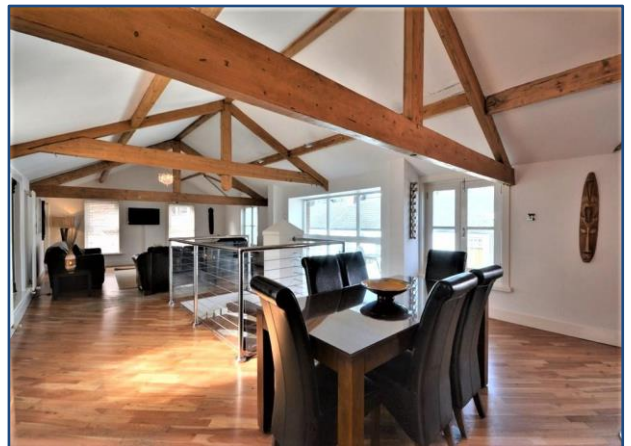
Two windows to front, mirror wardrobe, luxury cream carpets to floor, door to:

#### **EN-SUITE SHOWER ROOM** 6' 0" x 5' 7" (1.82m x 1.69m)

Shower, wash hand basin and WC, tiled flooring, door to:

#### **LIVING AREA** 46' 7" x 17' 7" (14.21m x 5.37m)

Large open plan living area with wooden beams in roof area. A modern fitted kitchen with 5 gas burner stove and oven and dishwasher. Two windows to side, window to rear, five windows to front, feature box window to front.



Sales

T: 01704 550048

E: sales@ajestateagents.co.uk



Rentals

T: 01704 543434

E: rentals@ajestateagents.co.uk

Property Management

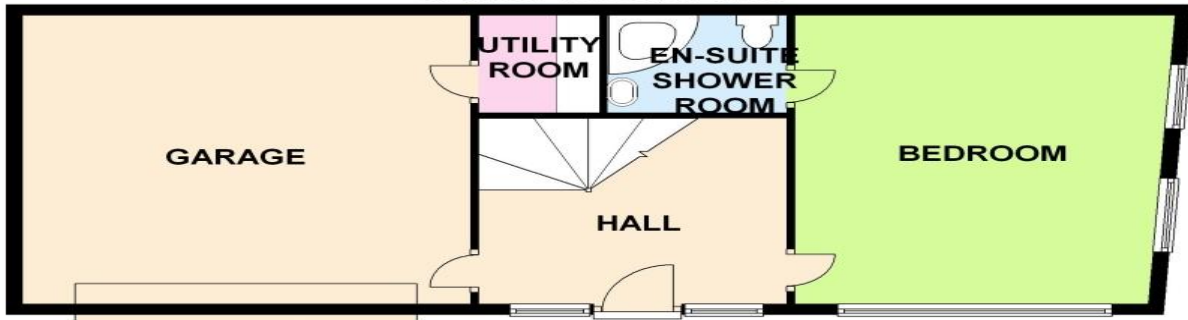
T: 01704 545800

E: pm@ajestateagents.co.uk

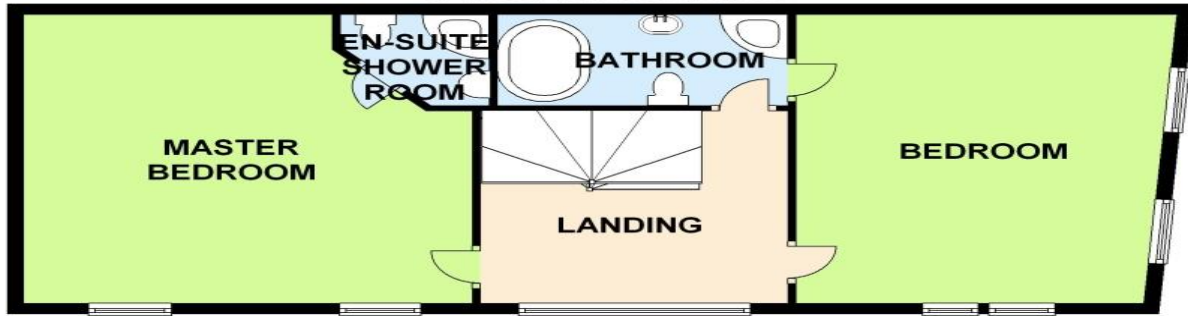


The Property Ombudsman

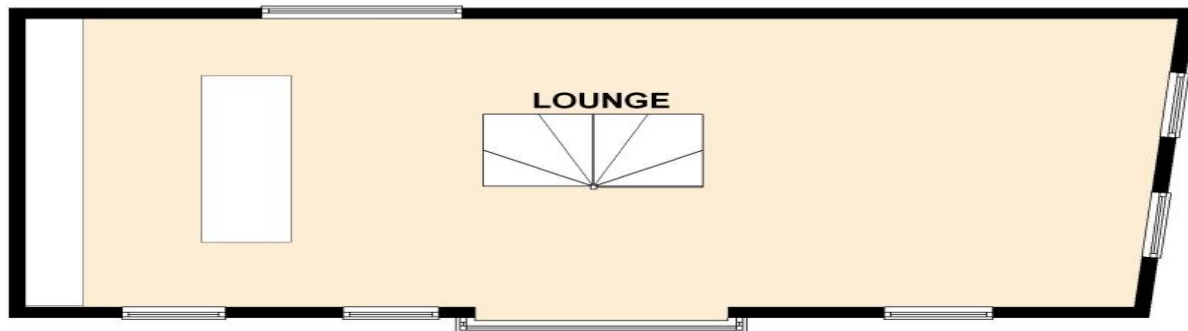
**GROUND FLOOR**  
APPROX. 73.0 SQ. METRES



**FIRST FLOOR**  
APPROX. 72.7 SQ. METRES



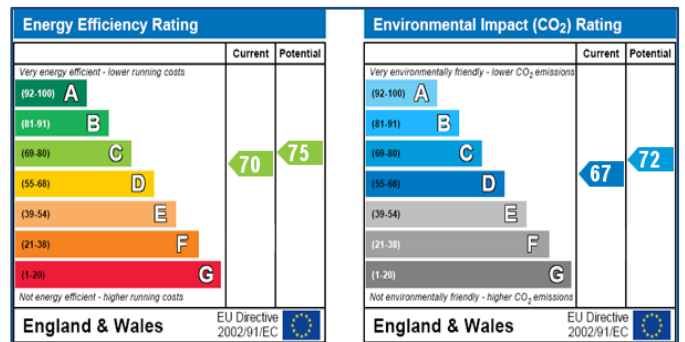
**SECOND FLOOR**  
APPROX. 74.9 SQ. METRES



TOTAL AREA: APPROX. 220.6 SQ. METRES

**Additional Information**

EPC: C  
Council Tax Band:  
Tenure:



Disclaimer: Interested parties should satisfy themselves, by inspection or otherwise as to the accuracy of the description given and any floor plans shown in these property details. All measurements, distances and areas listed are approximate. Fixtures, fittings and other items are NOT included unless specified in these details. Please note that any services, heating systems, or appliances have not been tested and no warranty can be given or implied as to their working order



**Sales**  
T: 01704 550048  
E: sales@ajestateagents.co.uk



**Rentals**  
T: 01704 543434  
E: rentals@ajestateagents.co.uk



**Property Management**  
T: 01704 545800  
E: pm@ajestateagents.co.uk



**The Property Ombudsman**